

ARCHEOLOGICAL PROPERTIES POTENTIAL
FOR THE PROPOSED
SD15726-B RAPID CITY 5
COMMUNICATIONS TOWER

Pennington County, South Dakota

T2N, R7E, Section 25

by
Lisa M. Jennings

Quality Services, Inc. Project #SD391501031

June 15, 2015



Lisa M. Jennings
Principal Investigator

Quality Services, Inc.

Archeology, Forestry, Geophysics, History & Paleontology

1621 Sheridan Lake Road, Suite A

Rapid City, SD 57702-3432

Phone 605-388-5309

Fax 605-388-5319

Email: info@qualityservices.us.com

www.qualityservices.us.com



Table of Contents

Table of Contents	i
List of Tables	i
List of Figures	i
Consultant Information	1
Tower Information	1
Determination of Effect	1
Additional Site Information	1
Tribal and NHO Involvement	2
Local Governments	2
Public Involvement	2
Other Consulting Parties	3
Area of Potential Effect	3
Cultural Resources Records Review	3
Cultural Resources Identified in the APE for Direct Effects	4
Photographs.....	6
Maps.....	7

List of Tables

Table 1. Archeological resources in the direct APE.....	3
Table 2. Archeological resources in the visual APE.....	3
Table 3. Previous inventories in the direct APE.....	3

List of Figures

Figure 1. Project plan.....	2
Figure 2. Aerial photo of project direct and visual APE.....	5
Figure 3. General location of proposed project within South Dakota.	7
Figure 4. SD15726-B Rapid City 5 Communications Tower.....	8

Consultant Information

Legal Name of Applicant's Section 106 Consulting Firm: **Quality Services, Inc.**
Name and Title of Principal Investigator: Lisa M. Jennings, Archeologist
Investigator's Address: 1621 Sheridan Lake Rd., Suite A, Rapid City, South Dakota 57702-3432
Phone: (605) 388-5309 Fax: (605) 388-5319 E-mail Address: info@qualityservices.us.com
Does Principal Investigator meet Secretary of Interior Professional Qualifications? Yes
Areas of Professional Qualification: Archeologist

Tower Information

- a. Site address: 1565 North Haines Avenue, Rapid City, SD 57701
- b. Nearest Crossroads: Lindbergh Avenue and Haines Avenue
- c. Tower height above ground level: 100 ft. with 10 ft. lightning rod
- d. Tower type: Monopole
- e. Current status: Construction has not yet commenced

Determination of Effect

Previously disturbed

No archeological resources in direct area of potential effects (APE).

No effect to archeological resources in the visual APE.

Additional Site Information

A 100 ft. monopole tower with a 10 ft. lightning rod will be located in a previously disturbed urban area. The tower lease area measures 12 ft. x 26 ft. and will contain a fenced compound including the tower and equipment shed. Utilities exist on the lot and will be routed to the tower lease along an existing utilities easement on the lot line. Access will be across an existing paved surface. The entire project area has been disturbed by construction for the existing businesses adjacent to the project area. The project area is located to the east of Goodwill Industries parking lot along a landscaped slope below a retaining wall.

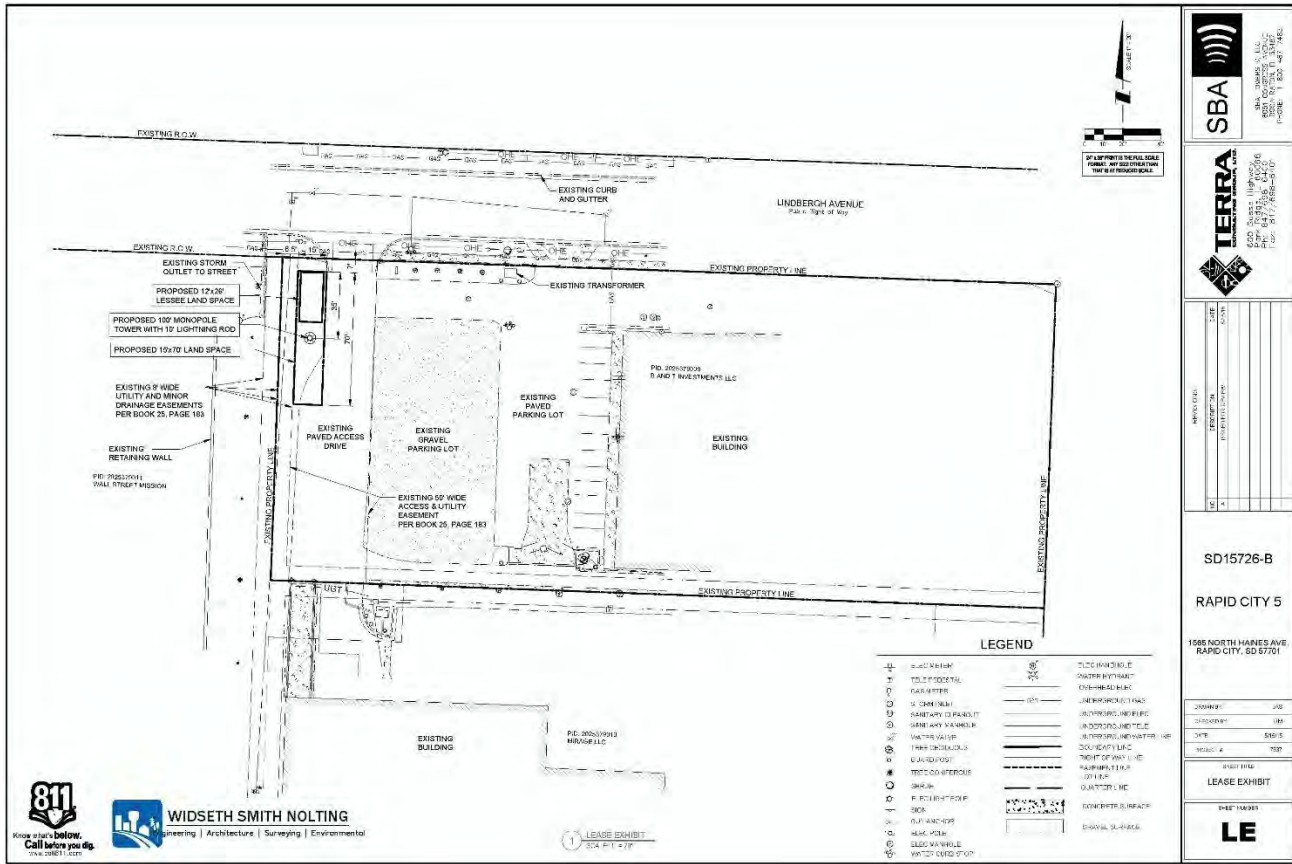


Figure 1. Project plan.

Tribal and NHO Involvement

Project information was entered into the Federal Communications Commission (FCC) Tower Construction Notification System (TCNS) by Ramaker & Associates, Inc. They will conduct follow up contacts according to FCC procedures.

Local Governments

Local governments are being contacted as needed by Ramaker & Associates, Inc. for any concerns they may have.

Public Involvement

Public notices will be sent as needed by Ramaker & Associates, Inc. and they will address any issues the public may have.

Other Consulting Parties

There are no additional consulting parties.

Area of Potential Effect

The APE for direct effects is limited to the area of potential ground disturbance and any property, or any portion thereof, that will be physically altered or destroyed by the undertaking (FCC04-222 pp. B16 Section VI.C.1). It was based on project maps provided by the client.

The APE for visual effects was determined to be 1/2 mile from the proposed project because the proposed project 200 ft. or less in overall height (see FCC04-222 pp. B17 Section VI.C.4).

Cultural Resources Records Review

This report covers only the potential for archeological resources to be within the proposed project areas of potential effect.

Section II.A.9 of the Nationwide Programmatic Agreement defines a “historic property” as: “Any prehistoric or historic district, site, building, structure, or object included in, or eligible for inclusion on, the National Register maintained by the Secretary of the Interior. This term includes artifacts, records, and remains that are related to and located within such properties. The term includes properties of traditional religious and cultural importance to an Indian tribe...that meet National Register criteria.”

Records search was conducted by **Quality Services, Inc.** GIS staff and archeologist Shawn French with the South Dakota State Historical Society on June 11, 2015. The National Register of Historic Places (NRHP) and National Historic Landmark online databases were also checked. The results are listed in the tables below.

Table 1. Archeological resources in the direct APE.

ID#	Name/ Type	NRHP	Potential Effect
None	N/A	N/A	N/A

Table 2. Archeological resources in the visual APE.

ID#	Name/ Type	NRHP	Potential Effect – Relationship to Project
39PN0855	Native American Isolated Flake	<i>Not Eligible</i>	No Effect – 0.17 mi. northwest

Table 3. Previous inventories in the direct APE.

Resource#	Author(s)	Year	Title
None	N/A	N/A	N/A

Cultural Resources Identified in the APE for Direct Effects

No archeological fieldwork was conducted.

The record search data (above) indicates there are no known archeological resources within the direct APE but there is one archeological resource, 39PN0855, within the visual APE. Site 39PN0855 is a **not eligible** isolated find consisting of a single flake found within a highly disturbed urban setting. The site is located approximately 0.17 miles to the northwest of the project area and will not be effected by this project.

The project area is located in a completely disturbed urban context (see photos below). The entire area has been previously disturbed by construction of utilities, parking lots, installation of immediately adjacent buildings, a retaining wall, as well as landscaping.

Natural Resources Conservation Services soils data indicates the proposed project is completely within the Pierre-Urban Land Complex soils, on 6 to 15 percent slopes. This component is found on hills and back slopes on dissected plains. The parent material consists of clayey residuum weathered from clayey shale. The natural drainage class is well drained. Water movement in the most restrictive layer is moderately low. Available water in this soil is reached at a depth of 80 inches or more. Shrink-swell potential is high. This soil is not flooded. This soil does not meet hydric criteria.

This project location is about 1.30 mile north of the Rapid Creek. Cultural resources potential would be significantly higher closer to Rapid Creek.

Even though the soil in the direct APE has some potential for historic or prehistoric cultural resources, the previous disturbance indicated above and shown in the project photos and aerial photo below, would have destroyed any cultural resources present.



Figure 2. Aerial photo of project direct and visual APE.
Proposed tower location/Direct APE is shown as pink dot. Yellow highlight is the visual APE.
Note area is previously disturbed by urban development.

No archeological resources are previously recorded within the direct APE and the area has been completely disturbed.

No effect to archeological resources in the visual APE.

Photographs



1. View of the property, facing north.



2. View of the property, facing east.



3. View of the property, facing south.



4. View of the property, facing west.



5. Overview of the property, facing south.



6. View of the access, facing north from the property.

Figure 3. Photos of the direct APE.

Maps



Figure 3. General location of proposed project within South Dakota.

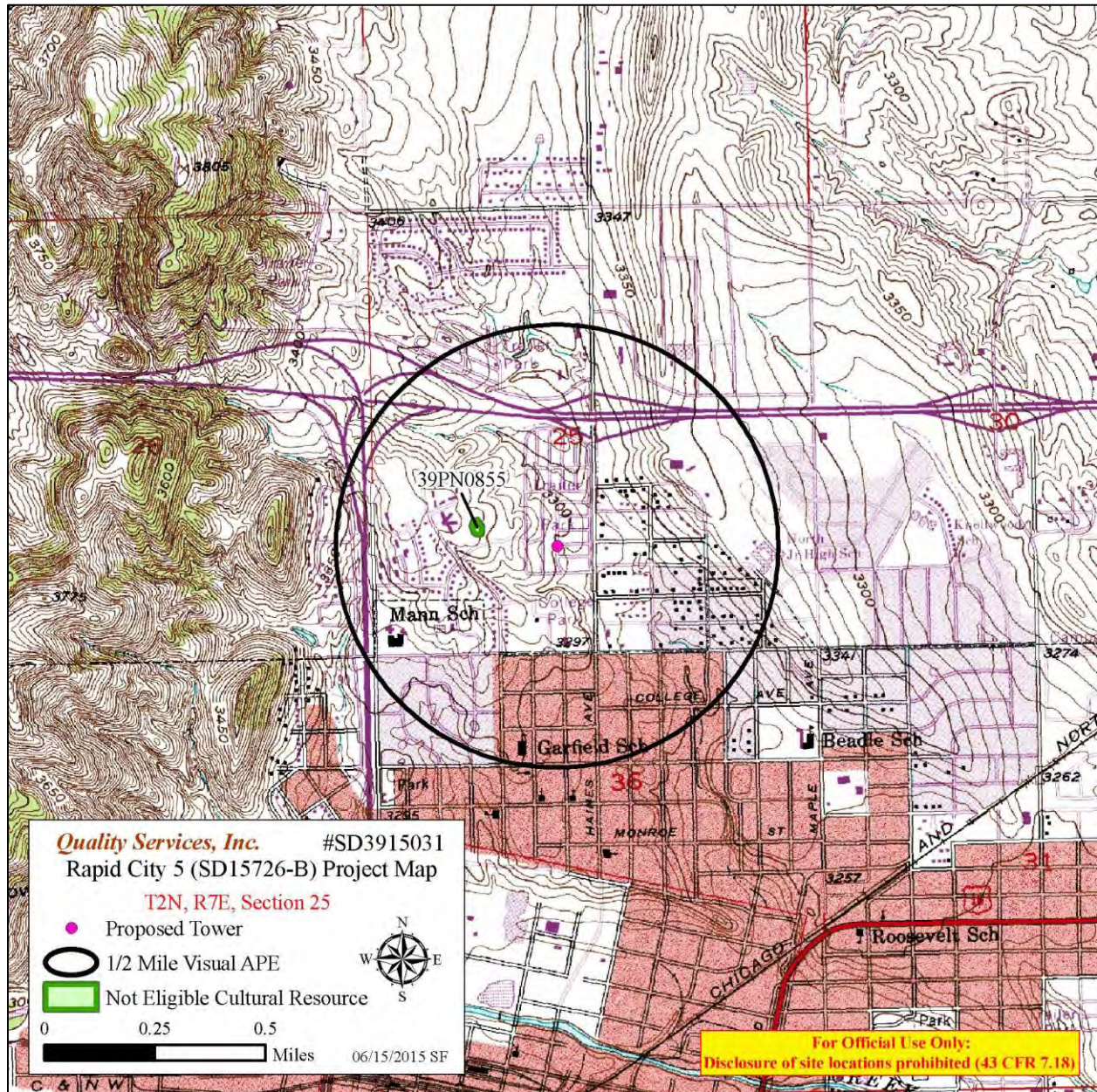


Figure 4. SD15726-B Rapid City 5 Communications Tower
 T2N, R7E, Section 25, Pennington County, South Dakota
 USGS 7.5' Rapid City East, South Dakota topographic quadrangle 1953 revised 1978